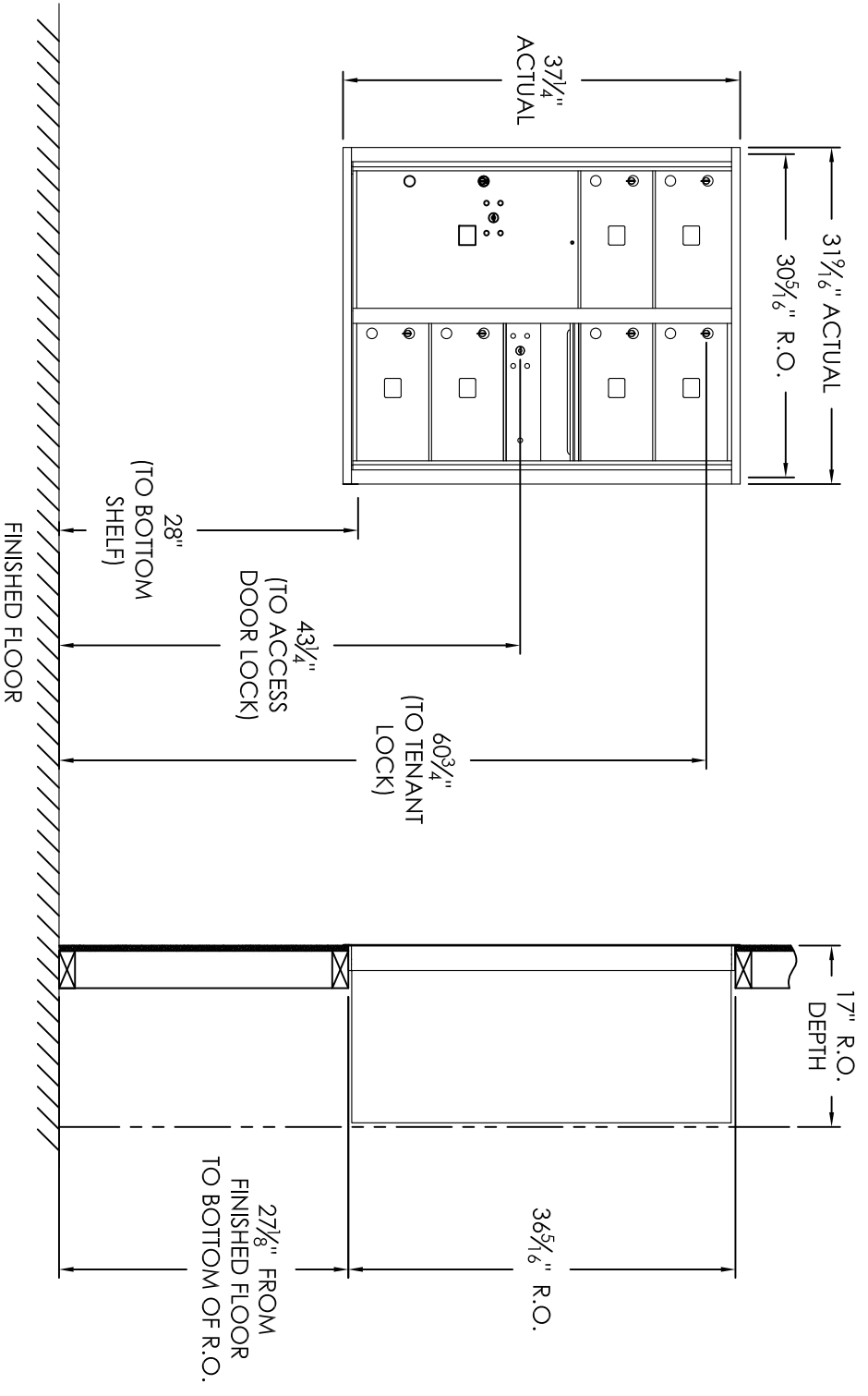


Versatile™ 4C Mailbox, 4C10D-06



COMPARTMENT CHART

DESCRIPTION	COMPARTMENT	COMPARTMENT SIZE	QTY.
MAILBOX	MB2	6-1/2" H x 12" W x 15" D	6
OUTGOING MAIL	OM2	6-1/2" H x 12" W x 15" D	1
PARCEL	PL6	20-1/2" H x 12" W x 15" D	1

PRODUCT SERIES: VERSATILE™ 4C FRONT LOAD MAILBOX



1743 Quincy Ave, Suite 151
 Naperville, IL 60540
 800-824-9985
 www.MailboxWorks.com

MODEL	4C10D-06	REV	D
SCALE	NONE	LAST REV DATE	5/15/14
DRAWING NUMBER	4C10D-06CS	DRAWN BY	RS

- Notes:
- This module meets the USPS STD-4C requirements for installation defined below when the mailbox is installed per the dimensions provided on this drawing.
 - At least one customer compartment shall be positioned less than 48" above finished floor (AFF).
 - No parcel locker (interior bottom shelf) shall be positioned less than 15" AFF.
 - No patron (tenant) lock shall be positioned more than 67" AFF.
 - No customer compartment (interior bottom shelf) shall be positioned less than 28" AFF.
 - The USPS Arrow lock shall be positioned 36"-48" AFF.
 - This 4C mailbox can also be used for private applications.
 - The rough opening width for multi-unit 4C installations = (the sum of all actual unit widths) - 1 7/8".