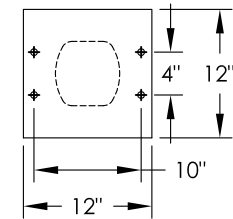
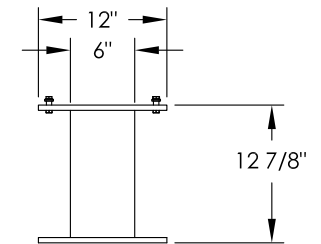
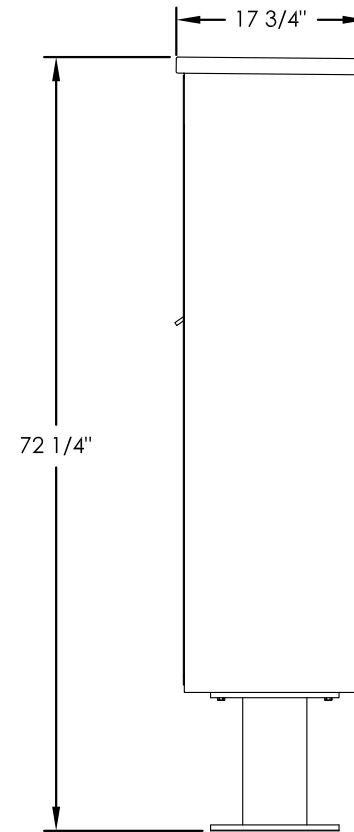
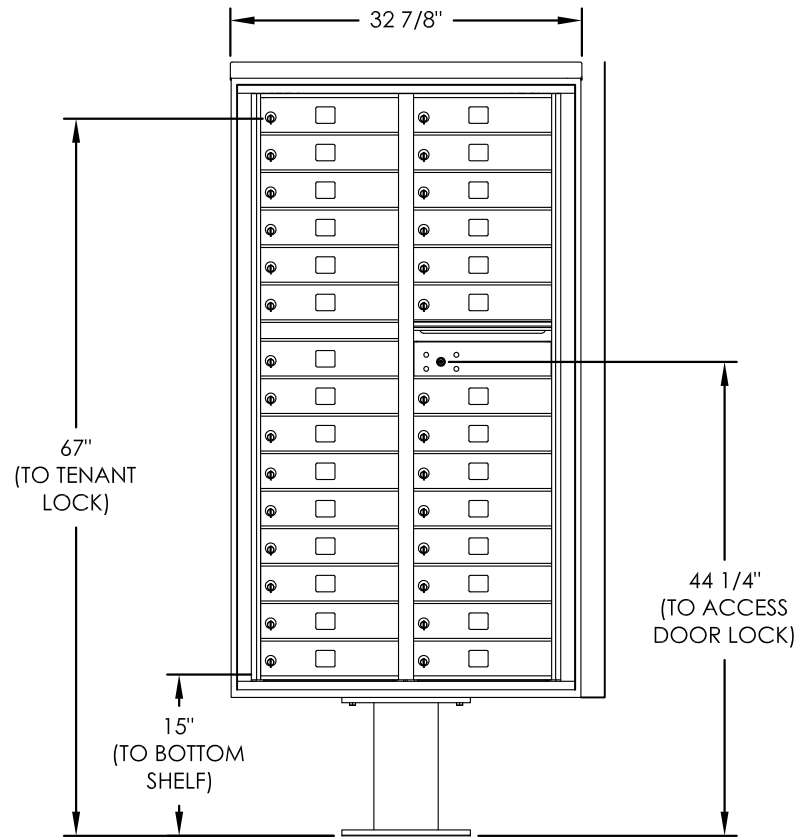


versatile™ 4C Pedestal Mount Mailbox, 4C16D-29-P



PEDESTAL DETAIL

COMPARTMENT CHART

DESCRIPTION	COMPARTMENT	COMPARTMENT SIZE	QTY.
MAILBOX	MB1	3" H x 12" W x 15" D	29
OUTGOING MAIL	OM1	3" H x 12" W x 15" D	1

Notes:

- This module does NOT meet USPS STD-4C installation specification requirements as shown below:
 - At least one customer compartment shall be positioned less than 48" above finished floor (AFF).
 - No parcel locker (interior bottom shelf) shall be positioned less than 15" AFF.
 - No patron (tenant) lock shall be positioned more than 67" AFF.
 - No customer compartment (interior bottom shelf) shall be positioned less than 28" AFF.
 - The USPS Arrow lock shall be positioned 36"- 48" AFF.
- This 4C mailbox is to be used for private applications.
- The rough opening width for multi-unit 4C installations = (the sum of all actual unit widths) - 1 1/8".

PRODUCT SERIES: VERSATILE™ 4C PEDESTAL MOUNT MAILBOX

The Mailbox Works
 1743 Quincy Ave. Suite 151
 Naperville, IL 60540
 800-824-9985
 www.MailboxWorks.com

MODEL	4C16D-29-P	REV	D
SCALE	NONE	LAST REV DATE	5/14/2014
DRAWING NUMBER	4C16D-29-PCS	DRAWN BY	SDH