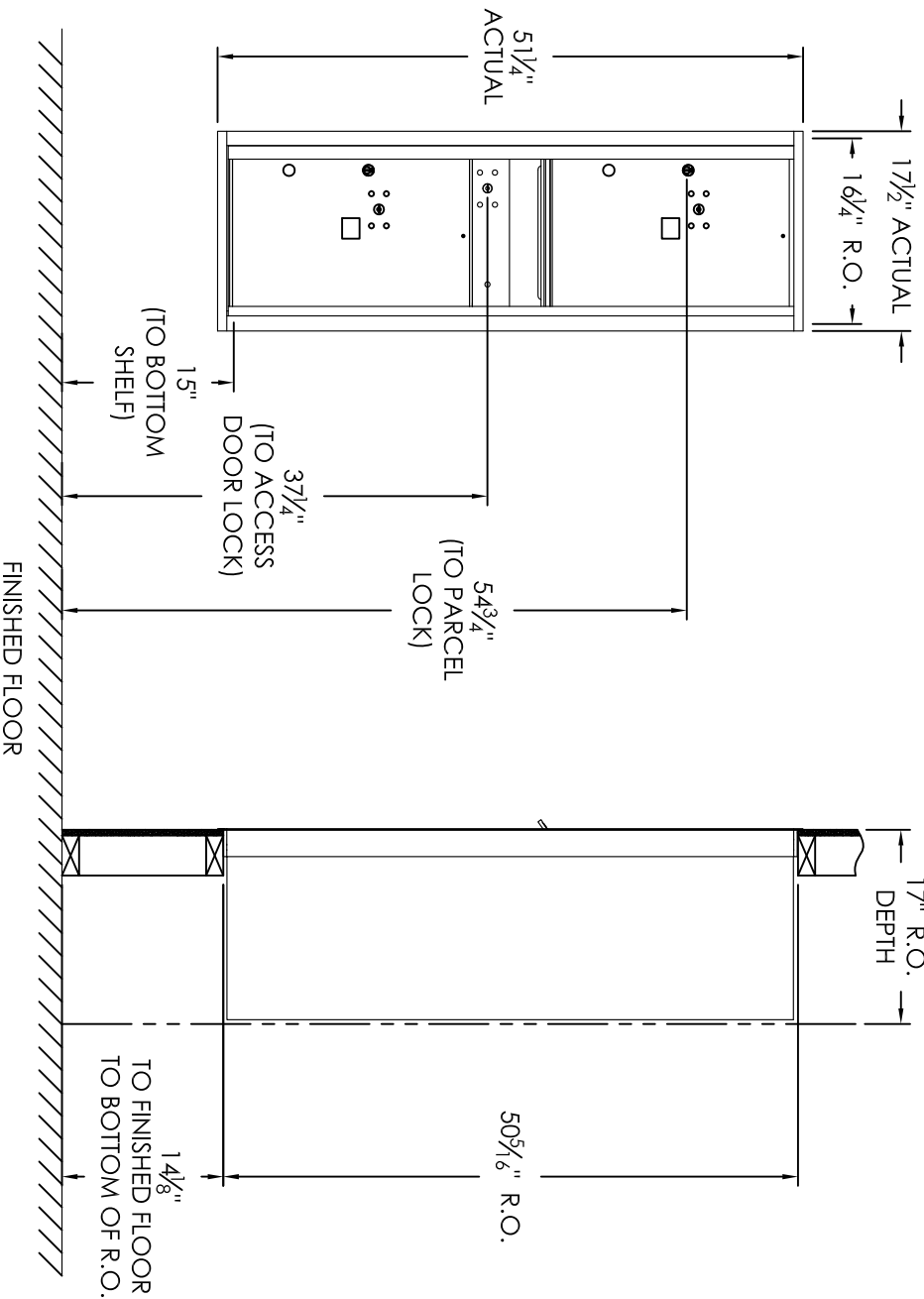


Versatile™ 4C Mailbox, 4C14S-2P



COMPARTMENT CHART

| DESCRIPTION | COMPARTMENT | COMPARTMENT SIZE | QTY. |
|---------------|-------------|------------------------------|------|
| OUTGOING MAIL | OM2 | 6'-1 1/2" H x 12" W x 15" D | 1 |
| PARCEL | PL6 | 20'-1 1/2" H x 12" W x 15" D | 2 |

PRODUCT SERIES: VERSATILE™ 4C FRONT LOAD MAILBOX



1743 Quincy Ave, Suite 151
 Naperville, IL 60540
 800-824-9985
 www.MailboxWorks.com

| MODEL | REV |
|----------------|---------------|
| 4C14S-2P | |
| SCALE | LAST REV DATE |
| NONE | 5/10/2014 |
| DRAWING NUMBER | DRAWN BY |
| 4C14S-2PCS | AFD |

- Notes:
- This module meets the USPS STD-4C requirements for installation defined below when the mailbox is installed per the dimensions provided on this drawing.
 - At least one customer compartment shall be positioned less than 48" above finished floor (AFF).
 - No parcel locker (interior bottom shelf) shall be positioned less than 15" AFF.
 - No patron (tenant) lock shall be positioned more than 67" AFF.
 - No customer compartment (interior bottom shelf) shall be positioned less than 28" AFF.
 - The USPS Arrow lock shall be positioned 36"-48" AFF.
 - This 4C mailbox can also be used for private applications.
 - The rough opening width for multi-unit 4C installations = (the sum of all actual unit widths) - 1 7/8".