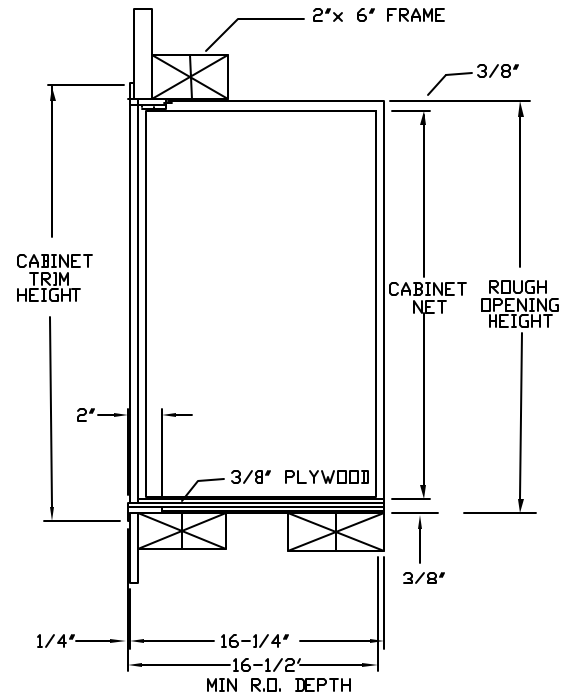

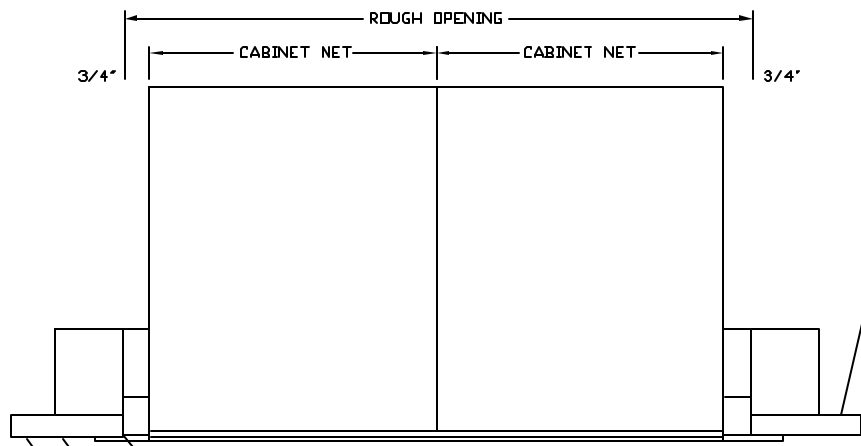


2600 SERIES HORIZONTAL MAILBOXES  
 FRONT LOADING INSTALLATION

WIDTH: (5 DOORS WIDE MAXIMUM)  
 CABINET TRIM WIDTH = NO. OF DOORS WIDE TIMES 6-1/2" + 3 -1/4"  
 CABINET WIDTH ROUGH OPENING = TRIM WIDTH MINUS 1"  
 OVERALL TRIM WIDTH OF CABINETS = SUM OF ALL CABINETS TRIM WIDTH  
 OVERALL ROUGH OPENING = OVERALL TRIM WIDTH OF ALL CABINETS MINUS 1"  
 HEIGHT: (7 DOORS HIGH MAXIMUM)  
 TRIM HEIGHT = NO. OF DOORS HIGH TIMES 5-1/2" + 2-1/4"  
 ROUGH OPENING = TRIM HEIGHT MINUS 1"

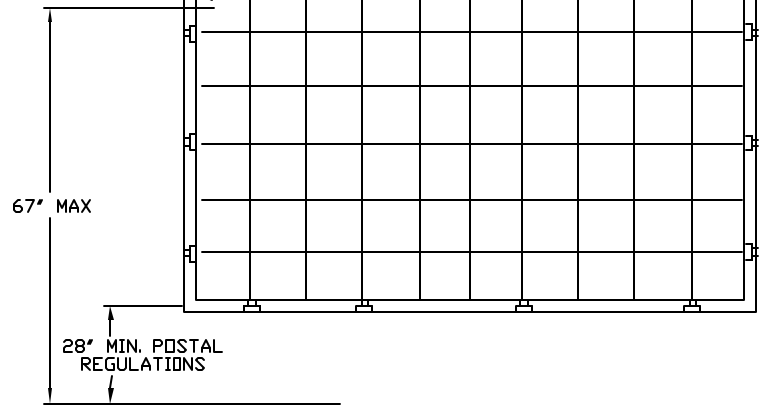


CUSTOMER			
JOB			
 <b>A-G</b> AUTH - FLORENCE MANUFACTURING COMPANY 481 METZBERG ROAD CLARKDALE, MISSISSIPPI 39318	DATE	5-15-01	P.O. NO.
	SCALE	1/16:1	ORDER NO.
	DRAWING NUMBER	5228	DRAWN BY

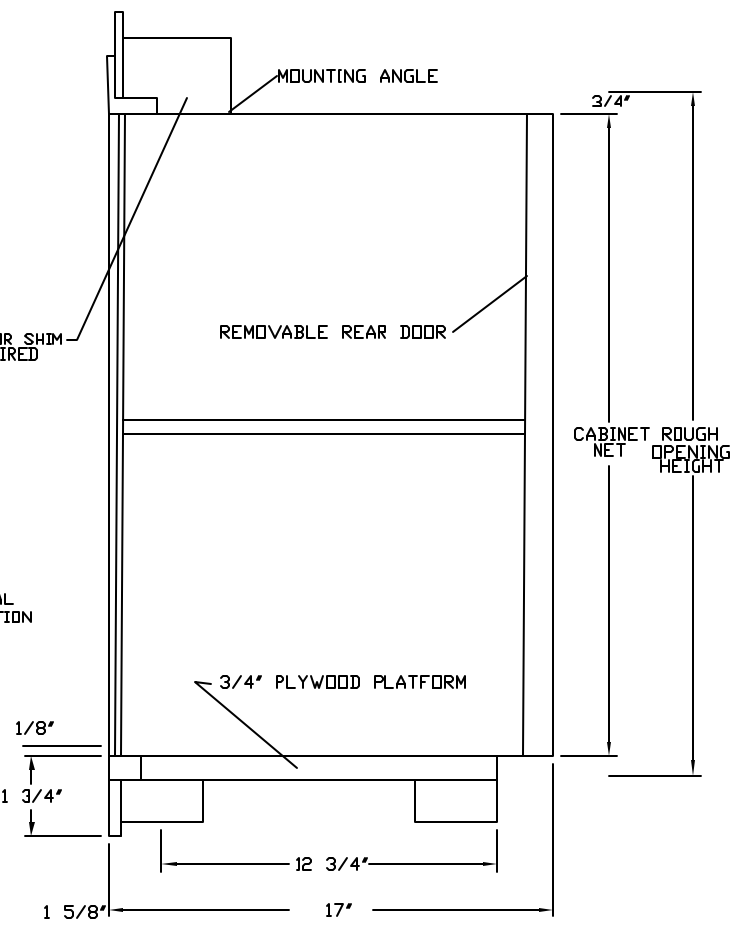


- # 672 CORNER BRACKET
- # 1388-4 TRIM BRACKET
- # 674 CORNER BRACKET
- # 673 SPRING CLIP
- # 672 TRIM BRACKET
- # 1388-4 SPRING CLIP

TENNANT LOCK



2600 SERIES HORIZONTAL  
REAR LOADING INSTALLATION  
V/TRIM



CUSTOMER			
JOB			
<p>AUTH - FLORENCE MANUFACTURING COMPANY 481 METZBERG ROAD CLARKDALE, MISSISSIPPI 39138</p>	DATE	5-15-01	P.O. NO.
	SCALE	1/16:1	ORDER NO.
	DRAWING NUMBER	5229	DRAWN BY